

When Dinosaurs Roamed the Wetumpka Impact Crater

February 20, 2015 – April 18, 2015

KFMG

KELLY FITZPATRICK MEMORIAL GALLERY

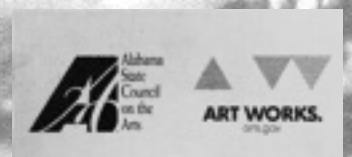
Studio Gallery

Hope Brannon

More than 85 million years ago, during the Cretaceous Period, a large meteor impacted the area now known as Wetumpka, Alabama. The impact resulted in a crater approximately five miles in diameter causing significant changes to both the landscape of the area and the inhabitants of both land and sea. At that time, the Wetumpka area was largely covered by an inland sea with barrier islands, and the climate was very different from today. This impact crater is regarded as one of the best preserved marine impact craters in the world.

The exhibition includes large scale paintings, iron sculptures, exhibition models, fossils, plants and a series of oversized educational storyboards outlining much of the scientific research about the crater area. The exhibition also features the work of Karen Carr, Jerry Armstrong, Rick Spears, Jonathon Hughes, Wayne Atchison, Larry Percy and Asher Elbein. Additionally, the exhibition includes a juried exhibition of 65 kindergarten through grade twelve student work and a juried exhibition of 35 adult artists from throughout Alabama.

Major funding provided through a grant awarded to the KFMG by the Alabama State Council on the Arts, which is made possible through funding from an annual appropriation by the Alabama State Legislature and the National Endowment for the Arts. This public support enables the Kelly Fitzpatrick Memorial Gallery to reach new audiences, foster community development, provide high quality programming, and demonstrate the importance of the arts as a component for quality of life in Alabama. Additional support provided by the City of Wetumpka, the Wetumpka Impact Crater Commission, the Kelly Fitzpatrick Memorial Gallery and Wind Creek Casino.



Major Funding Provided by:

Alabama State Council on the Arts and National Endowment for the Arts

SCHEDULE OF EVENTS

Gallery Hours: Monday through Friday from 9am – 4pm, Saturday 10am - 3pm

Docent Guided Tours: Thursday and Saturday between the Hours of 10 am until 3pm.

Student Reception and Award Ceremony: Thursday, March 5, 2015 from 3:30 – 4:30

Adult Reception and Award Ceremony: 5:00 – 6:30 pm

Annual Crater Lecture: Thursday, March 5, 2015 @ 7pm

(Dr. David King@ the Wetumpka Civic Center)

Annual School Crater Tours: Friday, March 6, 2015

Annual Public Crater Tours: Saturday, March 7, 2015

“Choose to Know” Saturday Lectures that are associated with the exhibition “When Dinosaurs Roamed: The Wetumpka Impact Crater” at the Kelly Fitzpatrick Memorial Gallery. All Saturday lectures are free and open to the public and will be presented in the Kelly Fitzpatrick Memorial Galley. Saturday lectures begin at 11am.

- February 21, 2015 @ 11 am - "Alabama's Remarkable Biodiversity and Paleobiodiversity." June Ebersole of the McWayne Science Center, Birmingham Alabama
- February 28, 2015 @ 11 am - Meteorites and Art, Jerry Armstrong, Cosmic Artist, Atlanta Georgia
- March 5, 2015 @ 7pm – The Science of the Wetumpka Impact Crater, Dr. David King, Auburn University Professor of Geology at the Wetumpka Civic Center
- March 21, 2015 @11am - Artists Talk, Geologically Speaking: The Kerygma Series, Larry Percy, Associate Professor of Art of Troy University, Troy, Alabama
- March 28, 2015 @ 11 am - Dana Ehret of the Alabama Museum of Natural History, the University of Alabama, Tuscaloosa, Alabama, “New Fossil Finds for the Alabama Museum of Natural History”
- April 11, 2015 @ 11 am - Art and Science and Making It Up As I Go Along: How to Create Paleo Restoration Models. Rick Spears of the Fernbank Science Center, Atlanta, Georgia
- Friday, May 1, 2015 (Time to be announced) Artists Talk, Paleoart and the Work of Karen Carr, Karen Carr, International Paleoartist of New Mexico

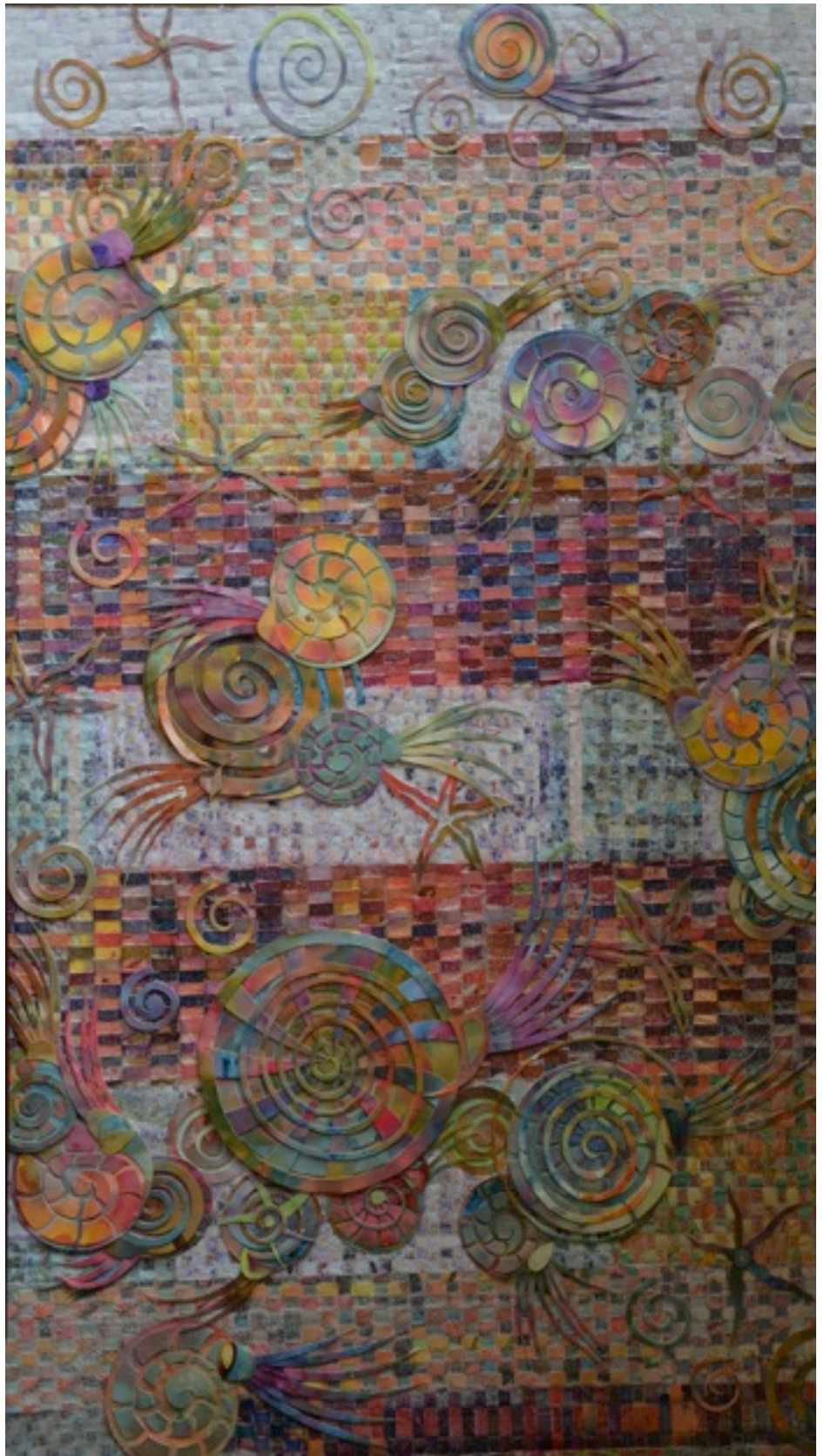


Hope Brannon

Hope's work includes several thought-provoking series, each incorporating a variety of media, processes, and techniques and each distinctive in its own right. On any given day you might find the smell of melted wax permeating her studio, while she is working on an encaustic painting, or you may see her sitting at a table meticulously cutting paper for one of her works in the "Alternate Endings" series. You might even see Hope in the yard ankle deep in a baby pool as she gains inspiration for her "Waterscapes" series or covered in spackling when working on one of her Chaco Canyon pieces for her "Fossils of Time" series. When not in the act of creating you will most likely find her engrossed in the research of symbols and stories. Her work includes broad symbolism, memories, stories, and mythology that she finds relevant.

Declining science scholarships, Hope chose to follow her passion for visual art. She attended Huntingdon College and earned her undergraduate degree in fine art from Auburn University at Montgomery. Shortly thereafter, she joined the faculty of a local college preparatory school. Although she intended to teach for only one year, her commitment to teaching art, mushroomed into a 21-year experience. During that time, she obtained a Masters of Education Degree with an emphasis in studio art from Troy University and developed her career as an artist and educator.

Throughout her career as a working artist, she has curated and adjudicated shows such as the Southeast Regional Fine Arts Exhibition at Northwest Florida State College and the nationally acclaimed Scholastic Art Awards, presented workshops and lectures throughout the United States, and taught students of all ages, ranging from kindergarten through adults. She has participated in both solo and group exhibitions. Hope has also been honored with national, state, and local awards including: the southeastern purchase award for The Wonders of Alabama Art sponsored by Energen Corporation, Birmingham, Alabama; her work Internal Compass was among four works selected for Hudson Alpha's DNA Exhibition in Huntsville, Alabama; she has been included in exhibitions at The Montgomery Museum of Fine Arts in Montgomery, Alabama and selected as the featured artist for The Eastern Shore Art Center in Fairhope, Alabama. Additionally, she has been featured in a number of collections and publications, and has been honored with the opportunity to create commissioned site-specific work for institutions such as; The City of Montgomery's Cramton Bowl, Montgomery, Alabama; Troy University, Troy, Alabama; The Confucius Institute, Troy, Alabama; Children's Hospital of Alabama, Birmingham, Alabama and The Women's Pavilion of UAB Hospital in Birmingham, Alabama.



Sedimentary Layers: Alternate Endings Series
Mixed Media Collage

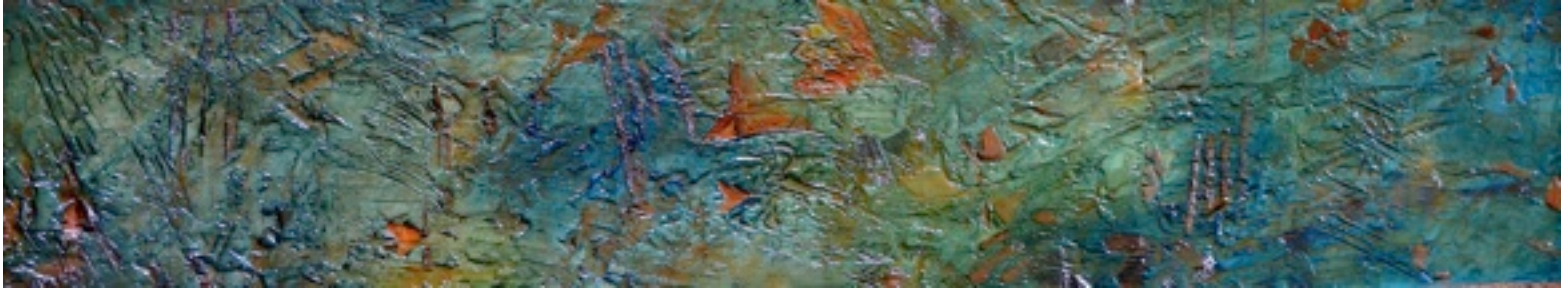


Time Capsule: Cretaceous Period Marine Environment

Oil on Shaped Canvas



Finding Fossils: Fossils of Time Series
Mixed Media



Sea Fossils: Fossils of Time Series
Mixed Media



Buried in the Earth: Near Extinction Series
Mixed Media

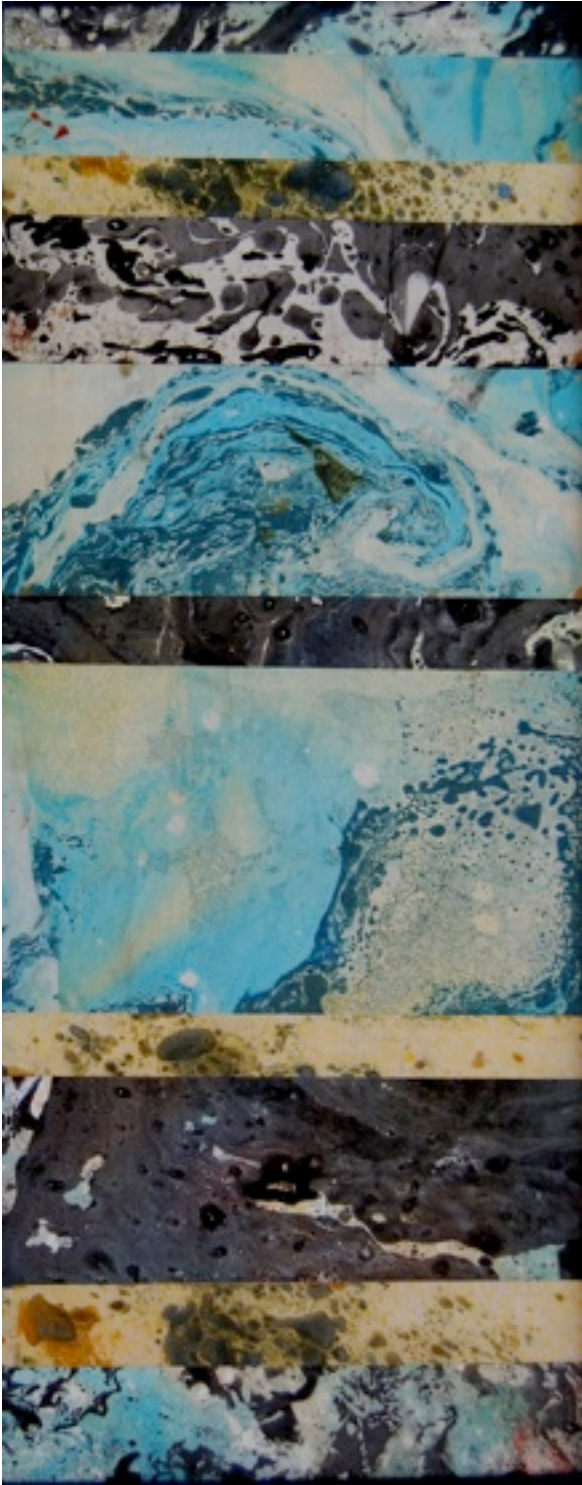


Walking on Water: Animals Series

Watercolor

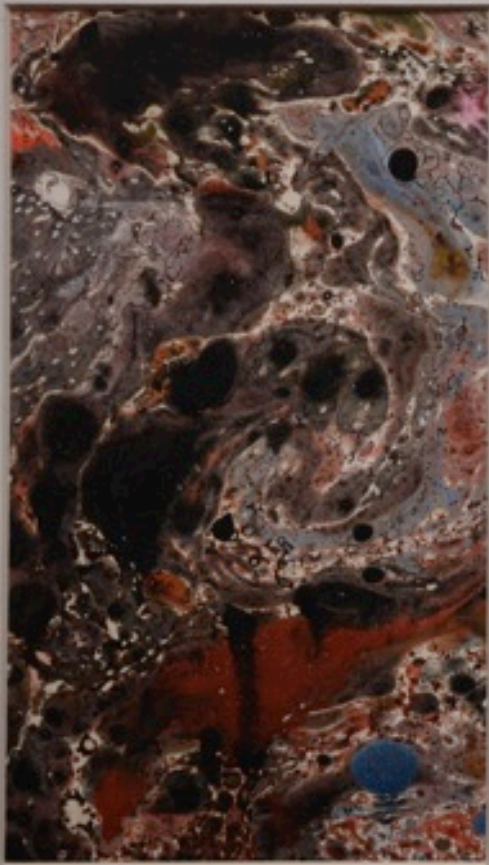


Flash Fire
Monoprint

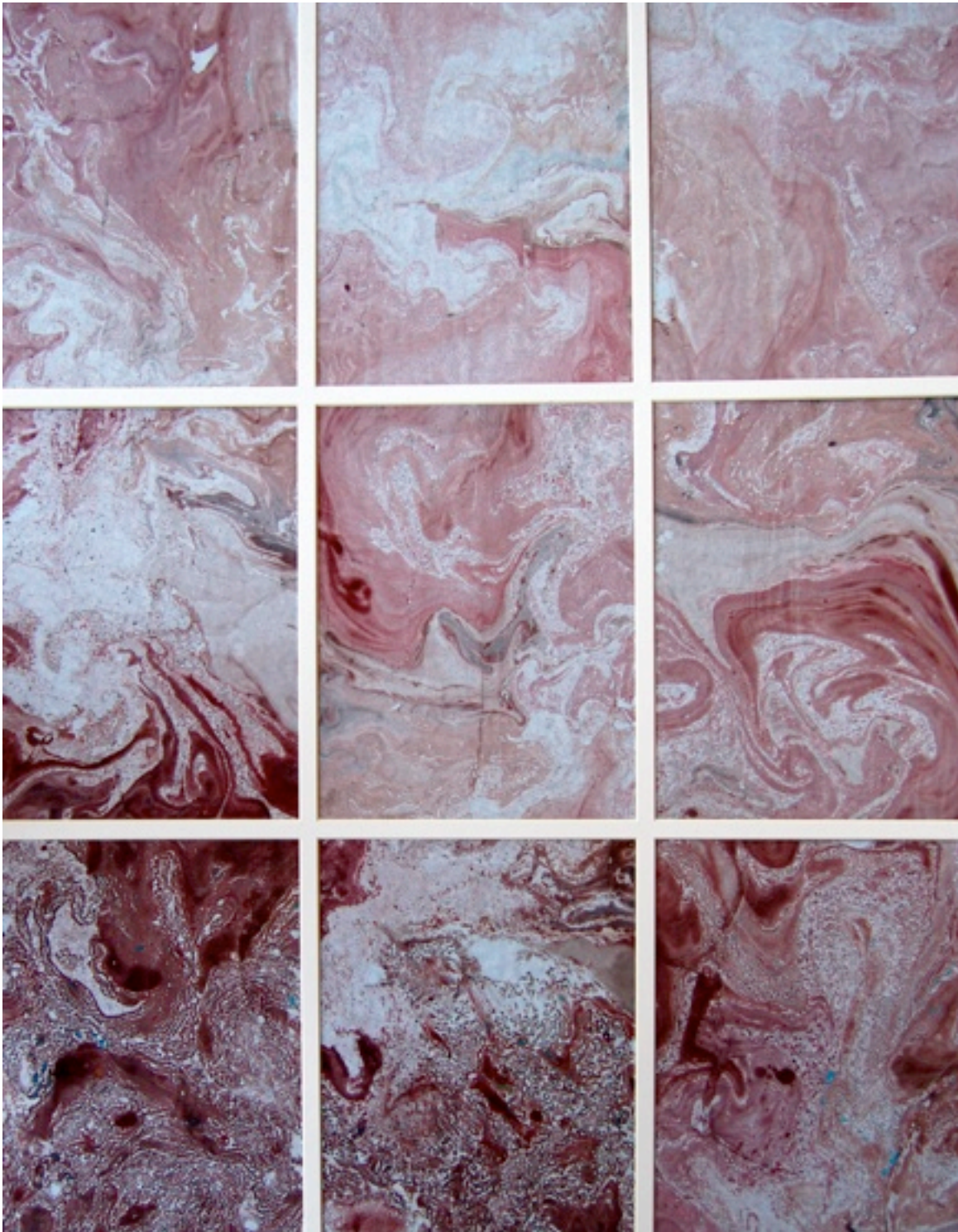


Earth and Air: Waterscapes Series

Oil on Paper



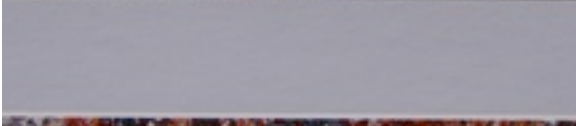
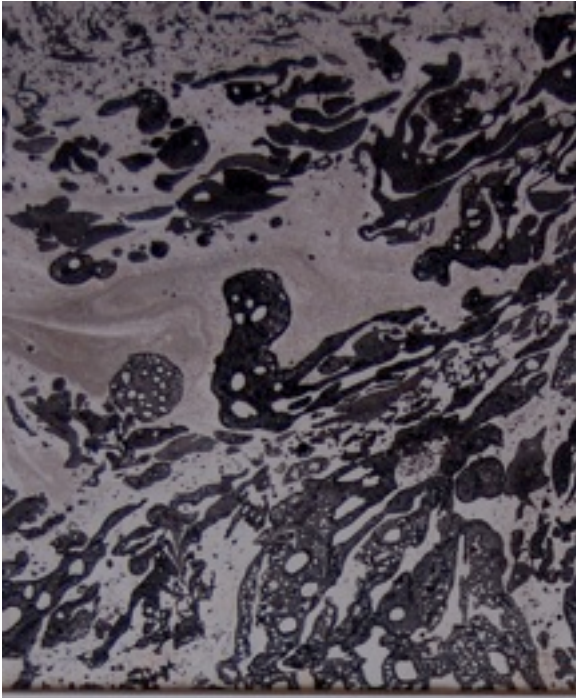
Alabama's Great Wave: Waterscapes Series
Oil on Paper



Red Tide: Waterscapes Series
Oil on Paper



Fire on Water: Waterscapes Series
Oil on Paper



Sea Impact: Waterscapes Series
Oil on Paper



KFMG

Kelly Fitzpatrick Memorial Gallery

408 SOUTH MAIN STREET | WETUMPKA, ALABAMA 36092 | KFMG-ONLINE.ORG