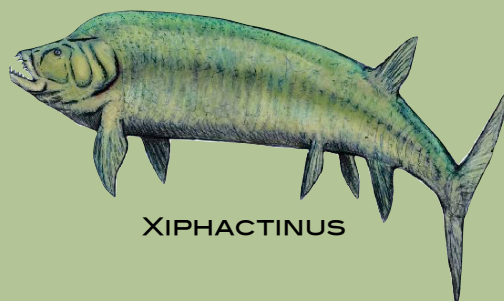
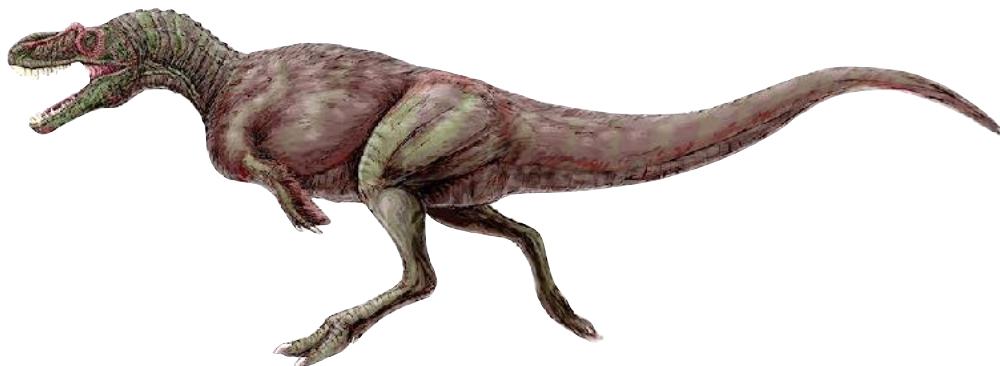
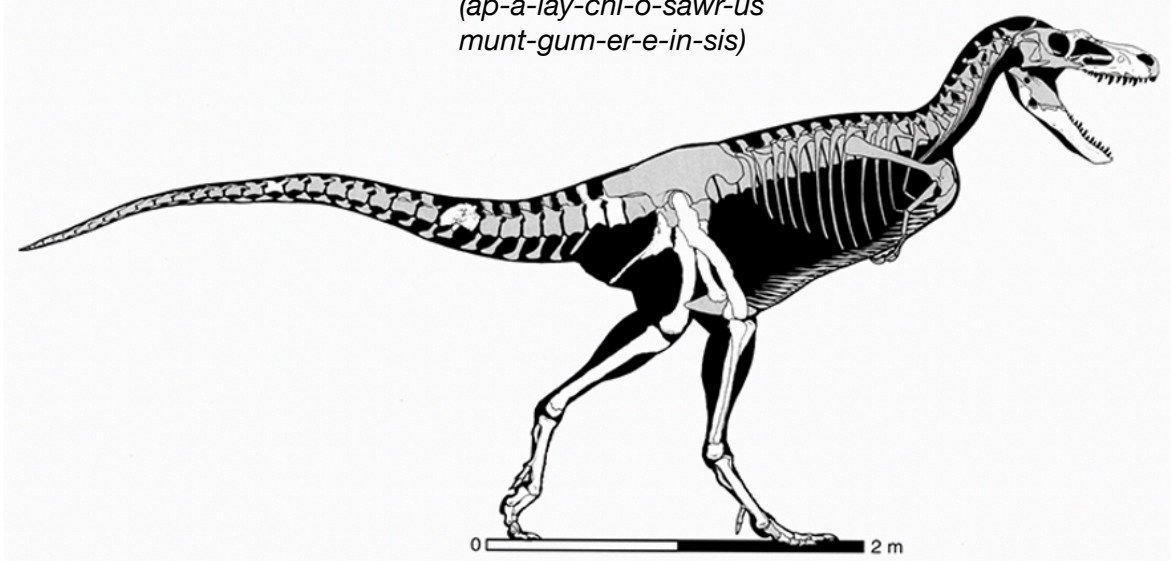


CRETACEOUS DINO & REPTILE BONES

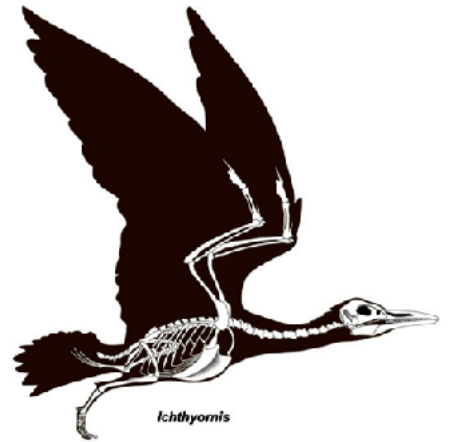
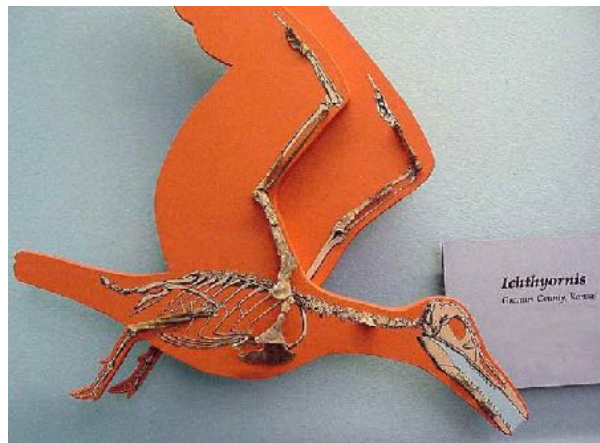
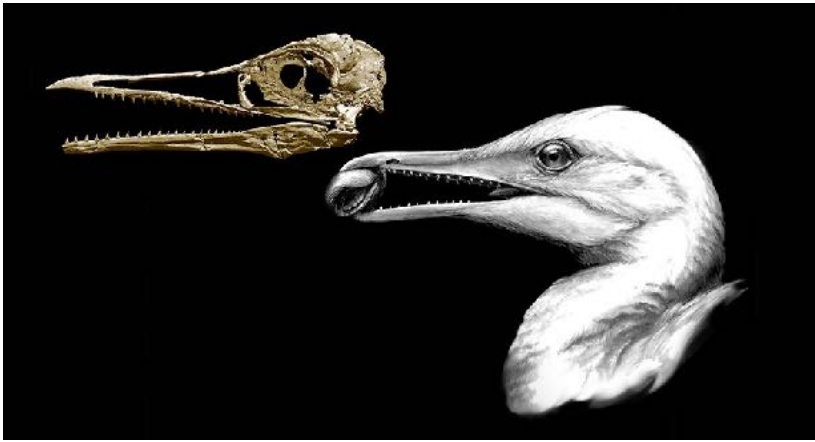


XIPHACTINUS

APPALACHIOSAURUS
MONTGOMERIENSIS:
(ap-a-lay-chi-o-sawr-us
munt-gum-er-e-in-sis)



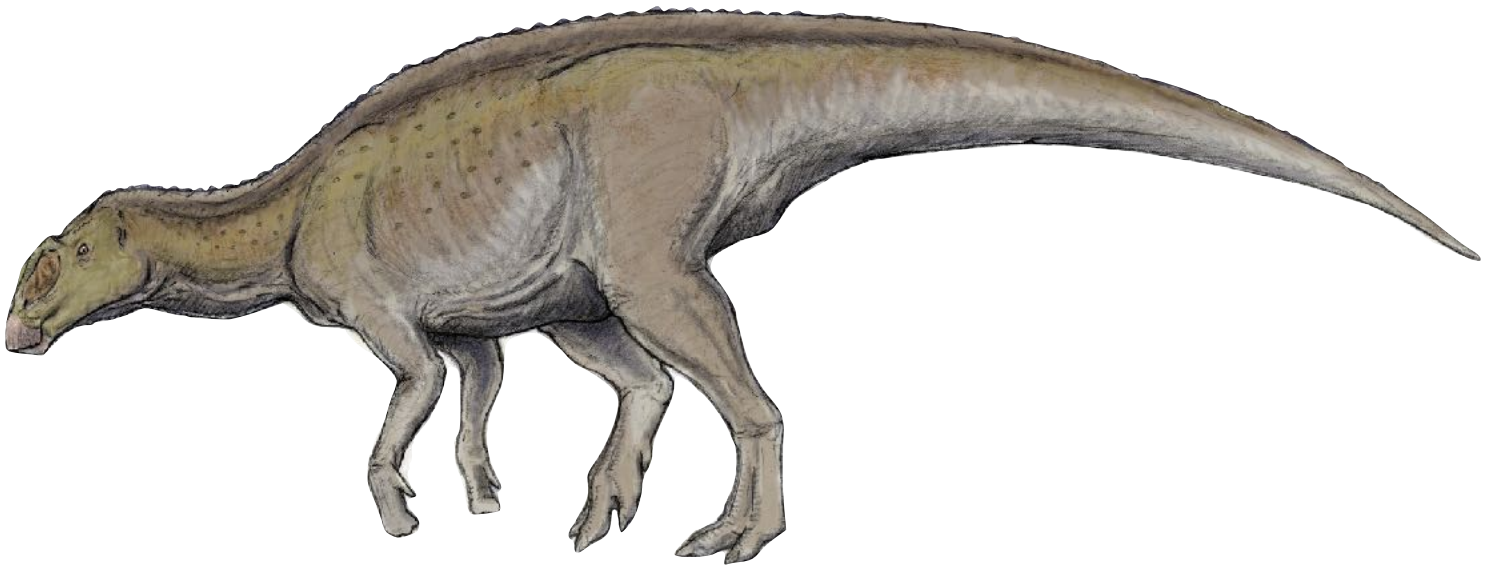
ICHTHYORNIS



LOPHORHOTHON
ATOPUS



Copyright Scott Hartman, 2004.

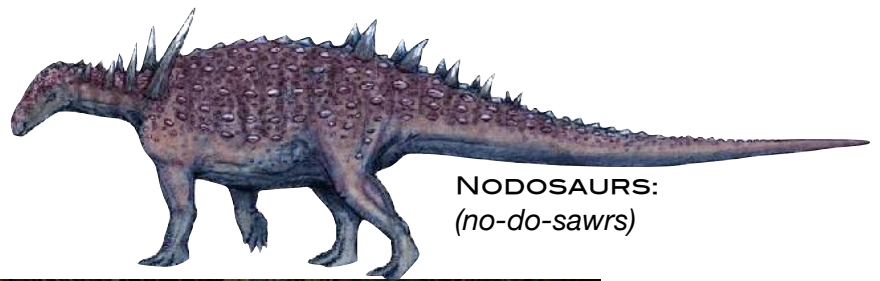


DROMAEOSAURS:
(dro-me-oh-sawrs)

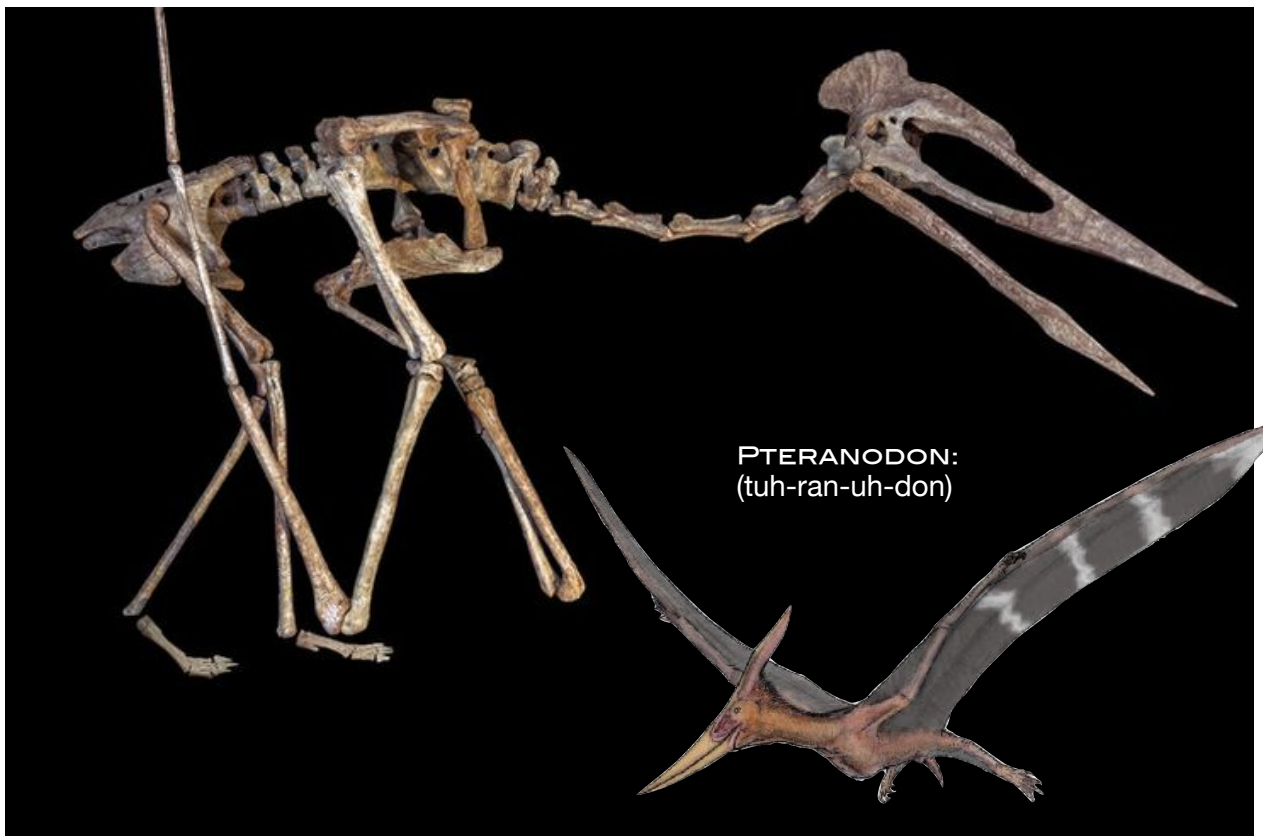


ORNITHOMIID:
(or-ni-tho-mi-mid)



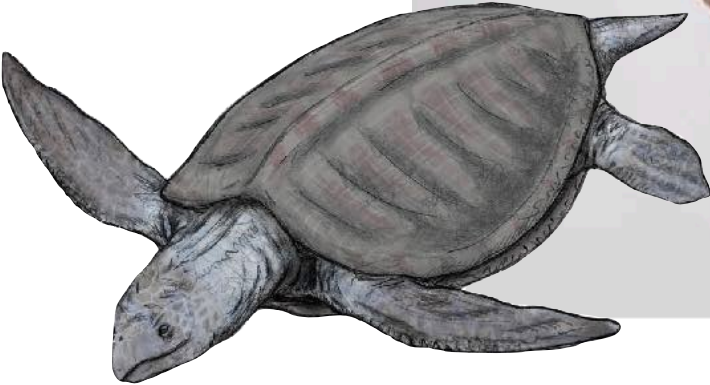


NODOSAURS:
(no-do-sawrs)

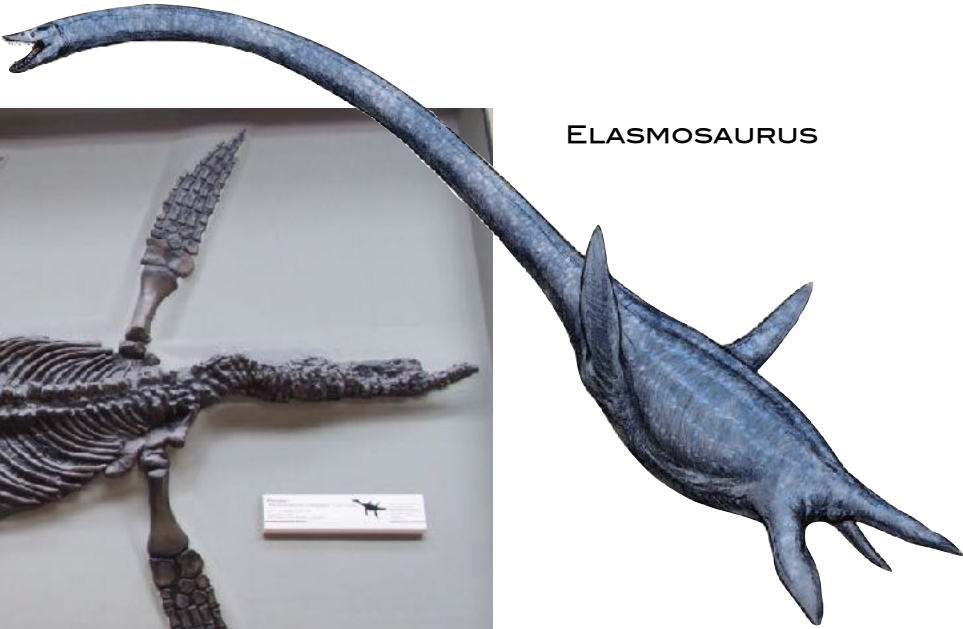
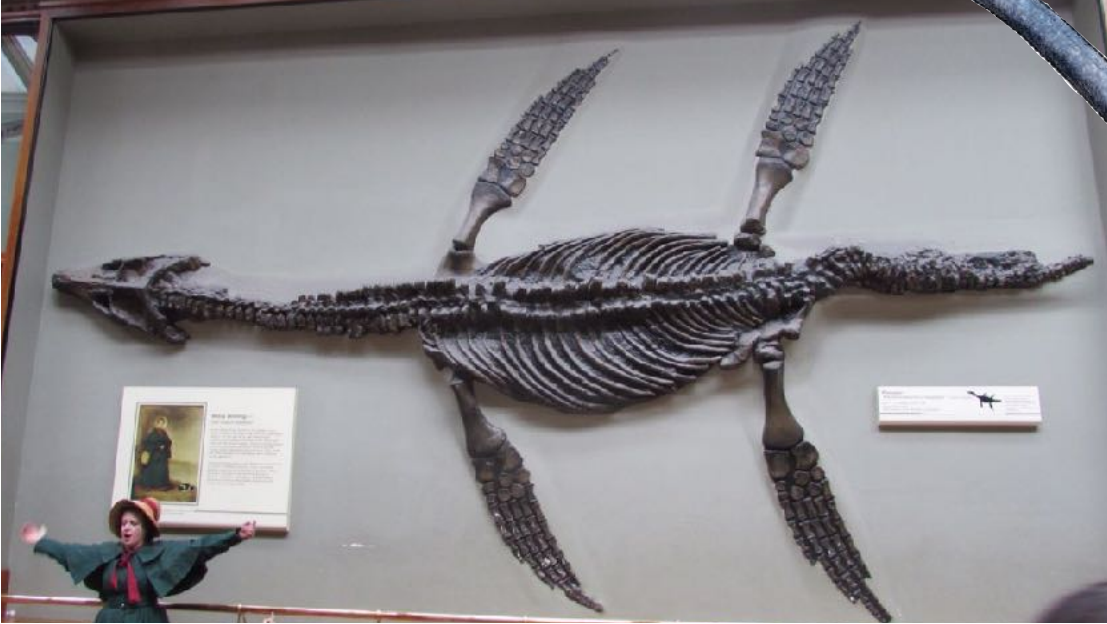


PTERANODON:
(tuh-ran-uh-don)

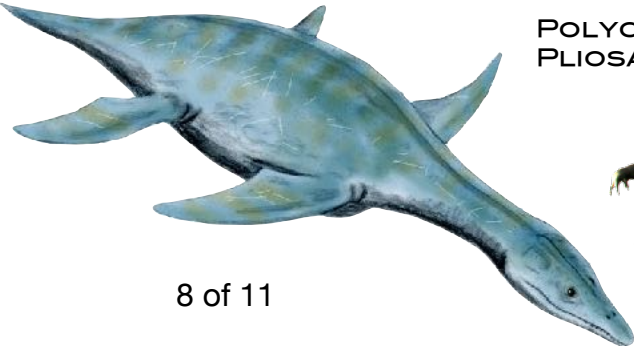
PROTESTEGA



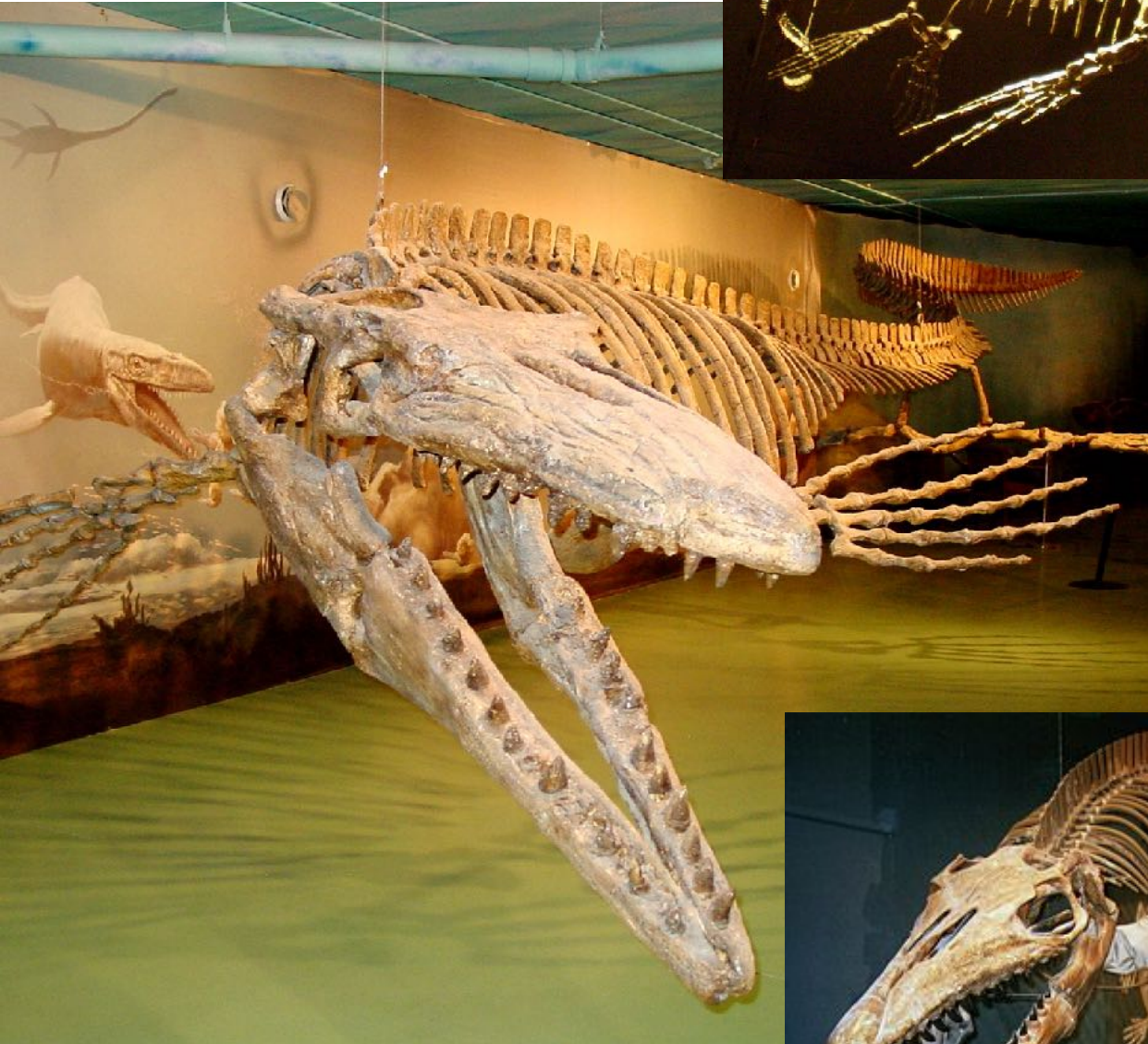
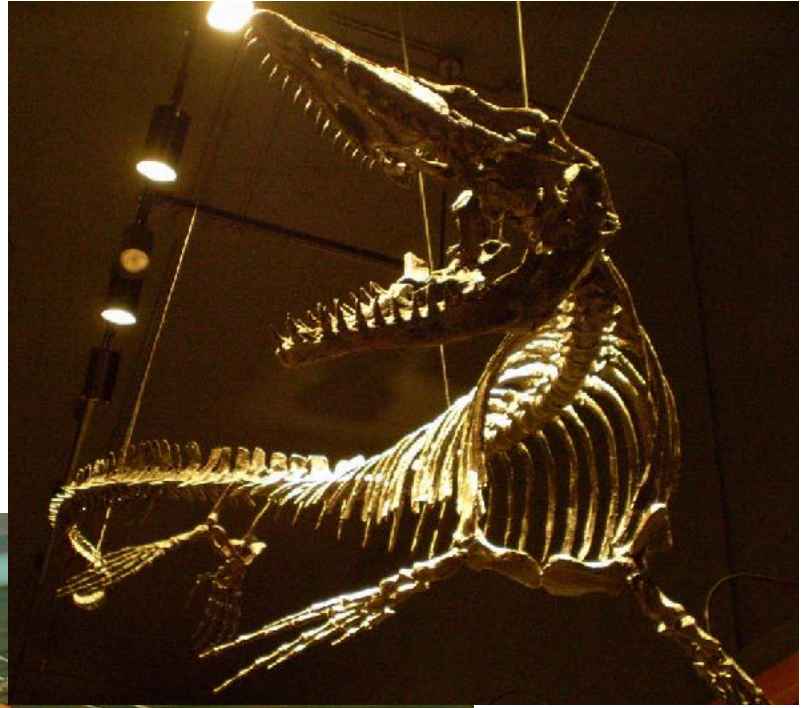
ELASMOSAURUS



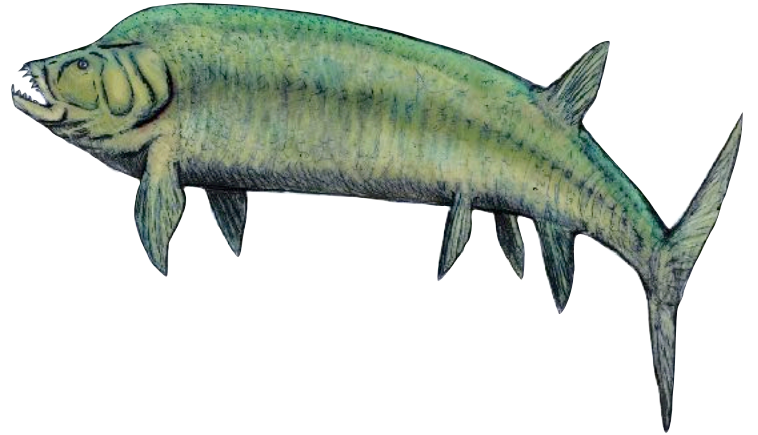
POLYCOTYLID
PLIOSAUR



MOSOSAUR



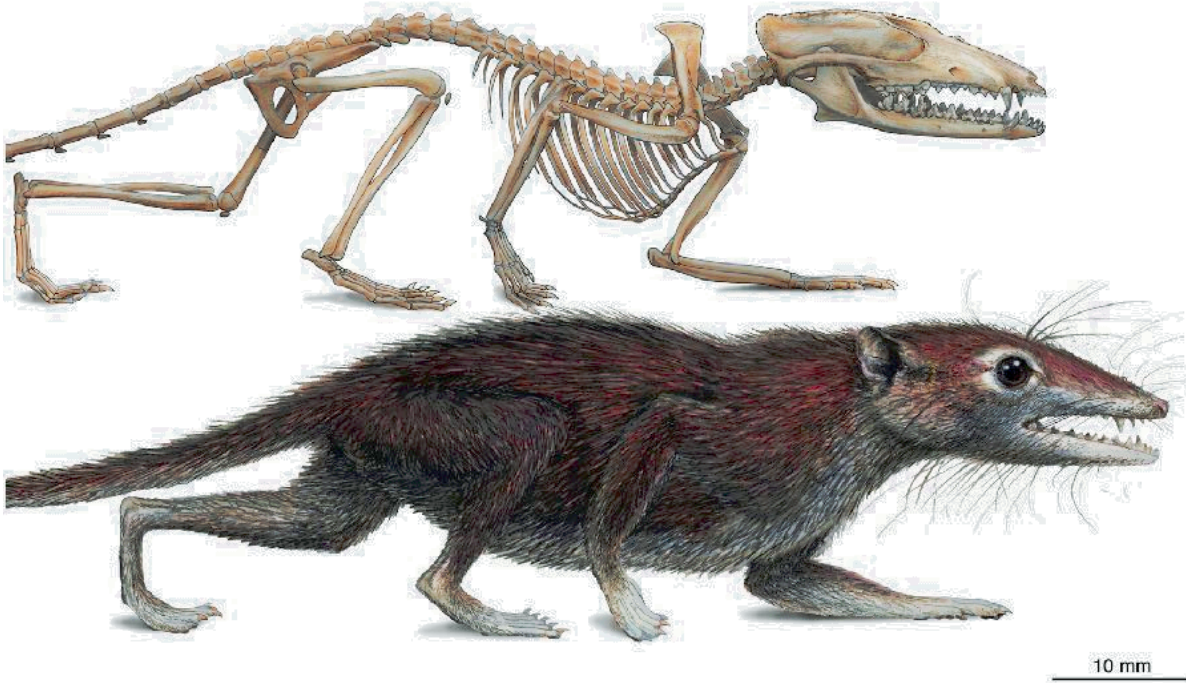
XIPHACTINUS



PROTOSPHYRAENA



CRETACEOUS RODENTS & MAMMALS



Mark A. Klingler / Carnegie Museum of Natural History

